

Office Space Available



**1611 N. Sheffield
Chicago IL.**

Approx 1,980 - 4,180 Sq. Ft.

- **Fantastic Lincoln Park Location at the NEC of North and Sheffield**
- **Open plan soft loft space with private washroom and stub in for kitchen.**
- **Live/Work Possible**
- **Great natural light and high ceilings**
- **Easy Access to Loop and Expressways**
- **Tenant Identity available on new electronic sign on building.**
- **Spaces can be combined**
- **2nd Floor - \$2500/mo**
- **3rd Floor - \$2900/mo**

For more information, please contact:

Steve Goldstein
312.840.9500 ext.201
steve@chicagobroker.com

ChicagoBroker.com
162 West Hubbard St.
Suite 300
Chicago, IL 60610



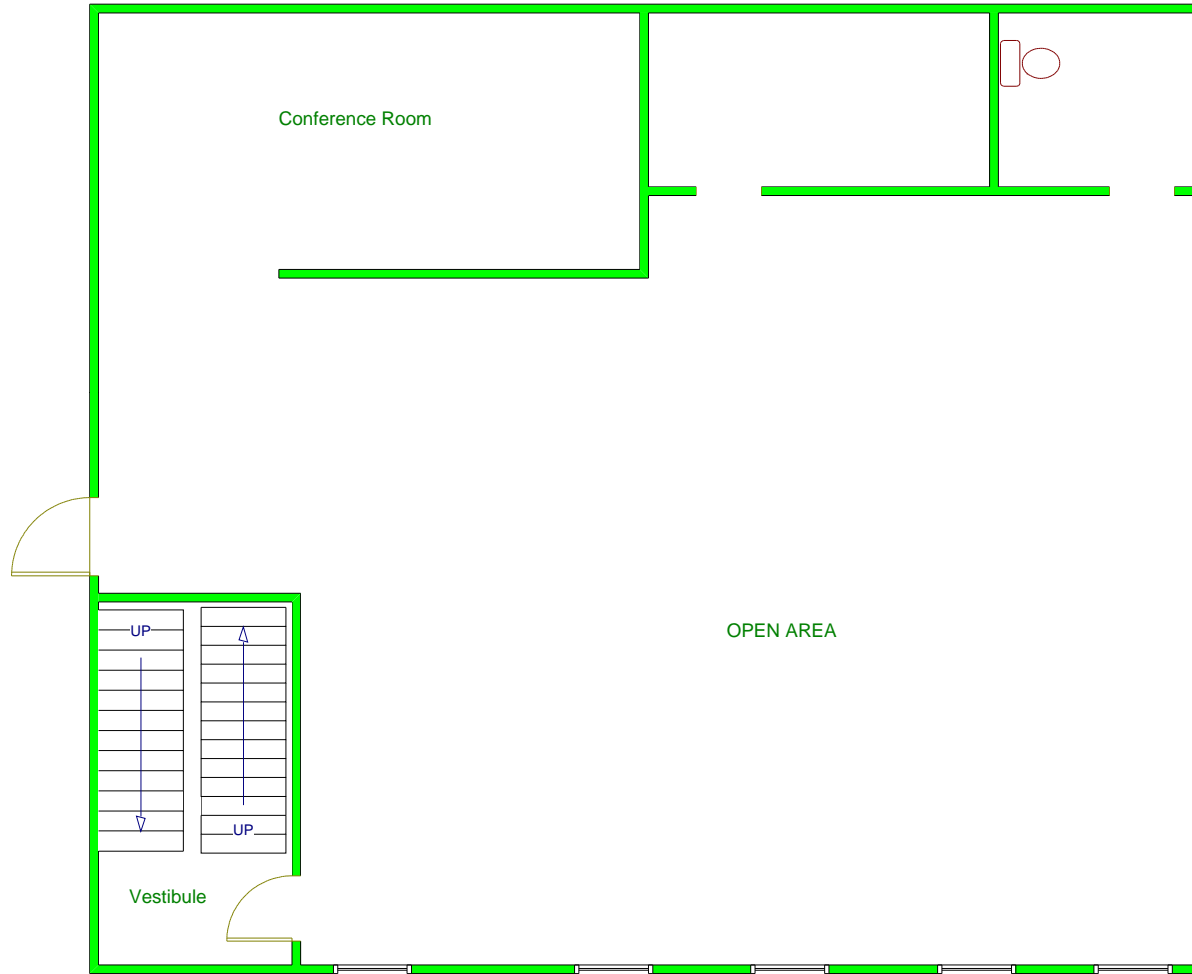
This statement with the information it contains is given with the understanding that all negotiations relating to the purchase, renting, or leasing of the property described above shall be conducted through this office. The above information, while not guaranteed, has been secured from sources we believe to be reliable.

1611 N Sheffield, Chicago



This statement with the information it contains is given with the understanding that all negotiations relating to the purchase, renting, or leasing of the property described above shall be conducted through this office. The above information, while not guaranteed, has been secured from sources we believe to be reliable.

1611 N Sheffield, Chicago 2nd Floor Plan



1611 N. Sheffield, Chicago

